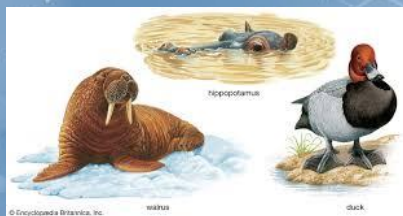


# Year 6 Science Learning Journey

A



## Summer

B

### Fossils



### Variation and Adaptation

Inheritance and characteristics  
Plant and animal adaptations  
Evolution  
Natural Selection

Fossil formation  
Exploring fossils  
- Mary Anning



A

### Light

How we see



Light and straight lines  
How light travels  
Shadow formation  
Shadow experiment  
Reflection  
Light pollution  
(sustainable energy)

## Spring

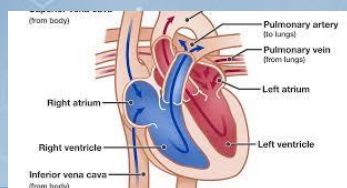
B

### Circulatory System

Blood

The heart

Oxygenated and deoxygenated blood  
Dissection of the heart  
Diet, drugs and lifestyle  
Heart rate experiment



A

## Autumn

B

### Electricity

### Living Things and their Habitats

Conditions for life  
Grouping organisms  
Classifying animals and plants  
Explore microorganisms  
Classify microorganisms



Circuit symbols  
Incomplete and complete circuits  
Variations  
Plan, conduct and evaluate experiments  
Renewable energy

